

# Fuels Treatment Overview

## Recommended Treatment Areas CC006,008,010,012 and SR001

### Claremont Canyon and Sibley Regional Preserves

Background: In 2010, the East Bay Regional Park District's Board of Directors approved the *Wildfire Hazard Reduction and Resource Management Plan* ("Plan") and the accompanying CEQA (California Environmental Quality Act) document which covers hill and shoreline parklands from Richmond to Castro Valley within the Measure CC (Measure FF) funded area. The approved Plan is an integral component of the Park District's Safe and Healthy Forests initiative for wildfire protection. This project covers Recommended Treatment Areas (RTA) CC006, CC008, CC010, CC012, and SR001.

Why: The purpose of this project is to establish a zone of natural habitat that is resistant to wildfires, more accessible for firefighters, and less fire-prone. Hazardous wildland vegetation will be reduced in the wildland-urban interface. Trees and other vegetation will be thinned out or removed throughout the project on Park District property with a focus on dead or diseased trees and areas of unmanaged thick brush with heavy dead component on the ridge and along Claremont Avenue. This project is largely in the footprint of the 1991 Tunnel Fire aka Oakland Hills Fire and will facilitate safer evacuations and reduce fire intensity in case of similar fire conditions. Healthy native oak and bay trees will be preserved and pruned. Some of the logs and branches will be chipped or masticated onsite, some will be completely removed, and some material in areas inaccessible to equipment will be left in piles to be burned during the rainy season. The work is prescribed by FEMA and fully permitted by State and Federal environmental regulatory agencies. Homeowners should continue to clear vegetation on their own property and take appropriate measures to protect their homes against wildfire.

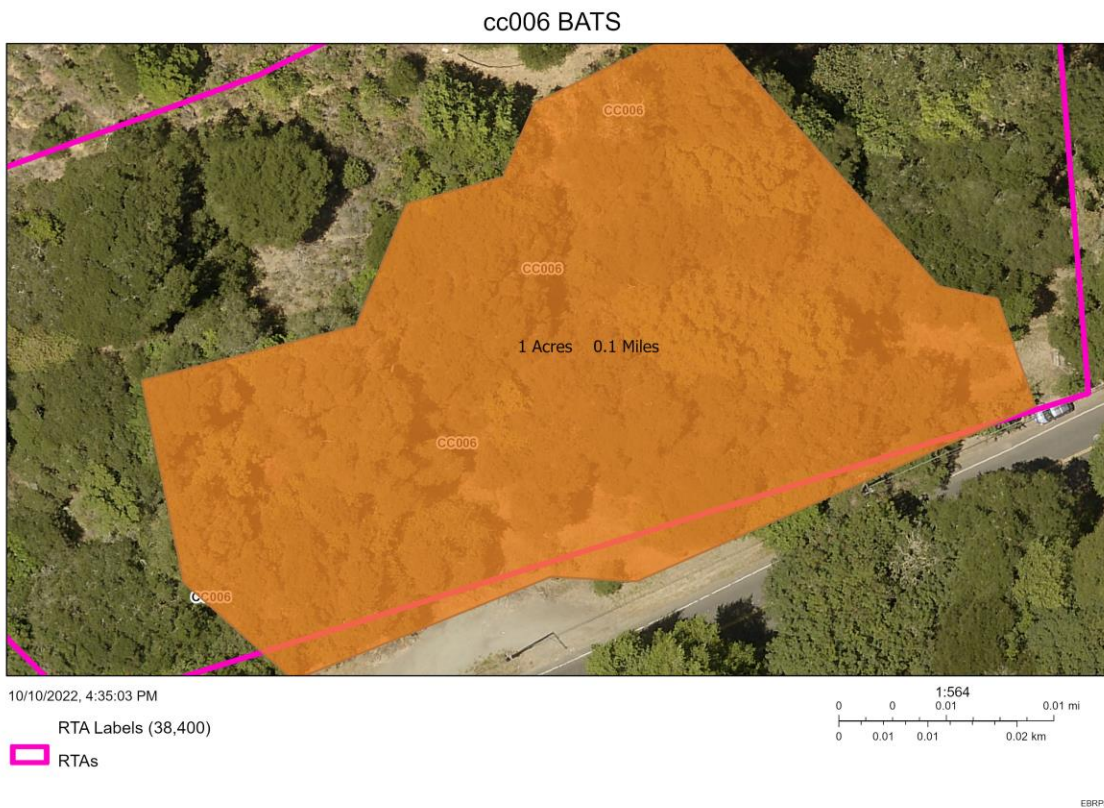
Who: The Park District's Fire Department is managing the project. Various crews and contractors will be performing the initial work and ongoing maintenance. Contractors may be using heavy equipment and chippers. The Park District's Stewardship Department and consulting biologists will be closely monitoring to ensure appropriate resource protection. The Park District's survey department may be surveying and marking some of the property boundaries to help us make sure we perform work on District lands.

When: A tree contractor is expected to begin tree and brush removal on October 17, 2022 extending through mid-November. The Park District and its contractors will minimize the impact to park users by restricting work hours to weekdays (7:30 am to 5:30 pm) and temporarily redirecting trail use, if necessary. Equipment and crews will be operating during the project.

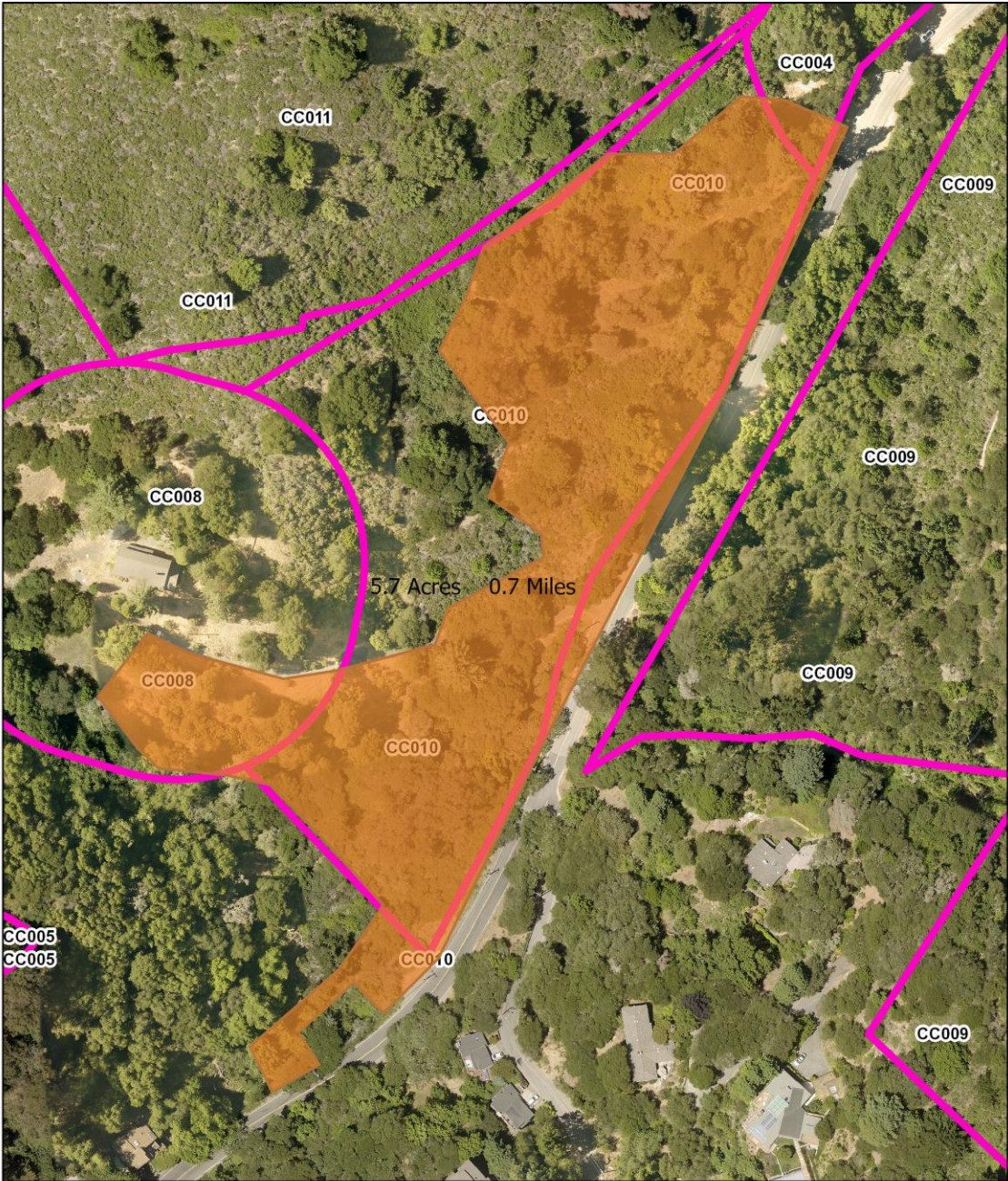
Additional Information: More information about the Park District’s Wildfire Hazard Reduction and Resource Management Plan and specific maps and reports can be found at: <https://www.ebparks.org/resource-managment/wildfire-resilience>

Updates to the current fuels management projects can be found by scrolling down the appropriate Recommended Treatment Area at: <https://www.ebparks.org/public-safety/fire/fuels-management/update>

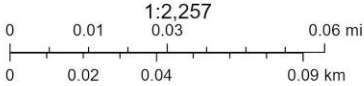
Site Map:



cc008-010 BATS



10/10/2022, 4:28:39 PM



RTA Labels (38,400)  
RTAs

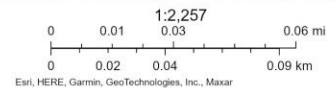
EBRPD

cc012-sr001 BATS



10/10/2022, 4:16:24 PM

RTA Labels (38,400)  
RTAs



EBRPD  
Esri, HERE, Garmin | Earthstar Geographics |

CC006,008,010,012 and SR001 Fuels Treatment Overview  
Last update: October 12, 2022